

CAPLESJEFFERSON**ARCHITECTS**PC
House in Vermont



House in Vermont

Greensboro, Vermont

1975

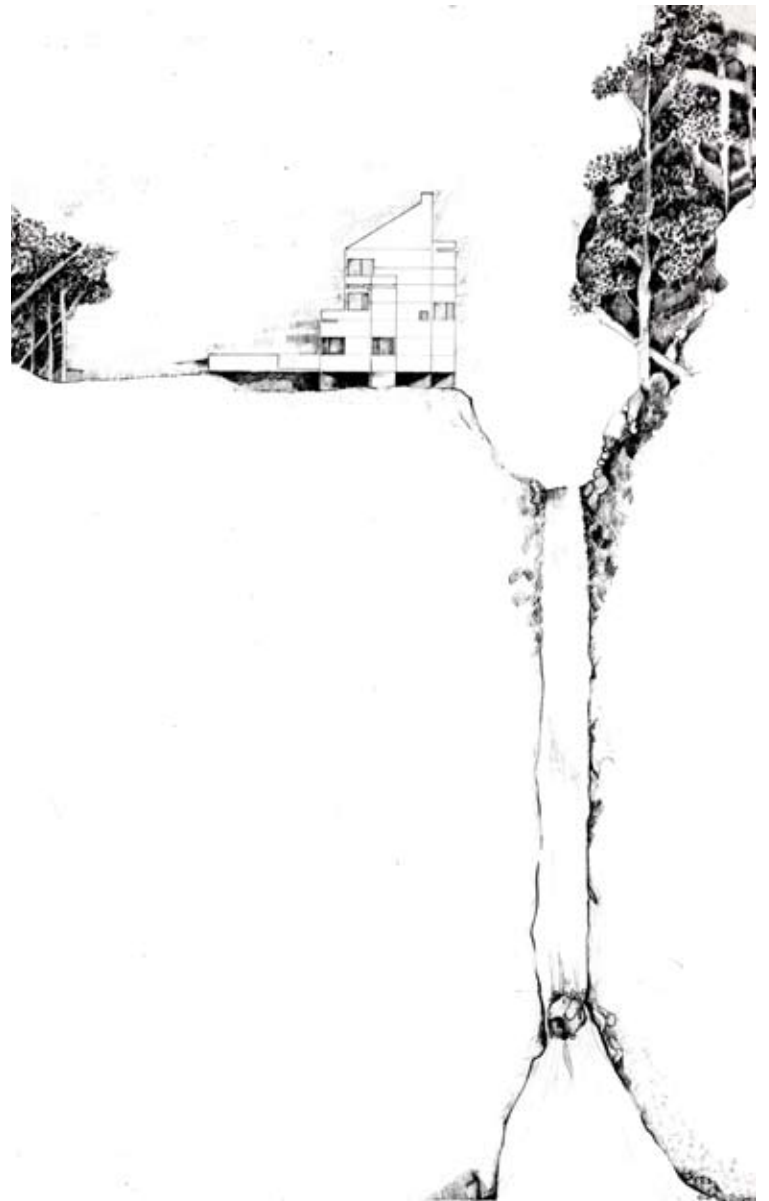
A place to work among the trees, overlooking the waterfall. A place that fills with music—or the quiet rustle of the leaves. The warm colors of the fall are reflected in the pumpkin tones of the plywood cladding, a bright autumn reminder in the snow and during the greening of the summer. The copper flashings have led the plywood to last for many seasons, wicking off the powerful waters of the place.

A small house designed for difficult terrain. The site includes a twenty foot gorge and is at a 30 to 45 degree slope which terminates at the bottom with a deep lake. It is covered by an old growth forest.

The exterior planning is related to the site challenges. There had to be a minimum of forest and ground disturbance because of erosion. There was also the attaining of maximum natural light since the house would be surrounded by 80 foot high trees.

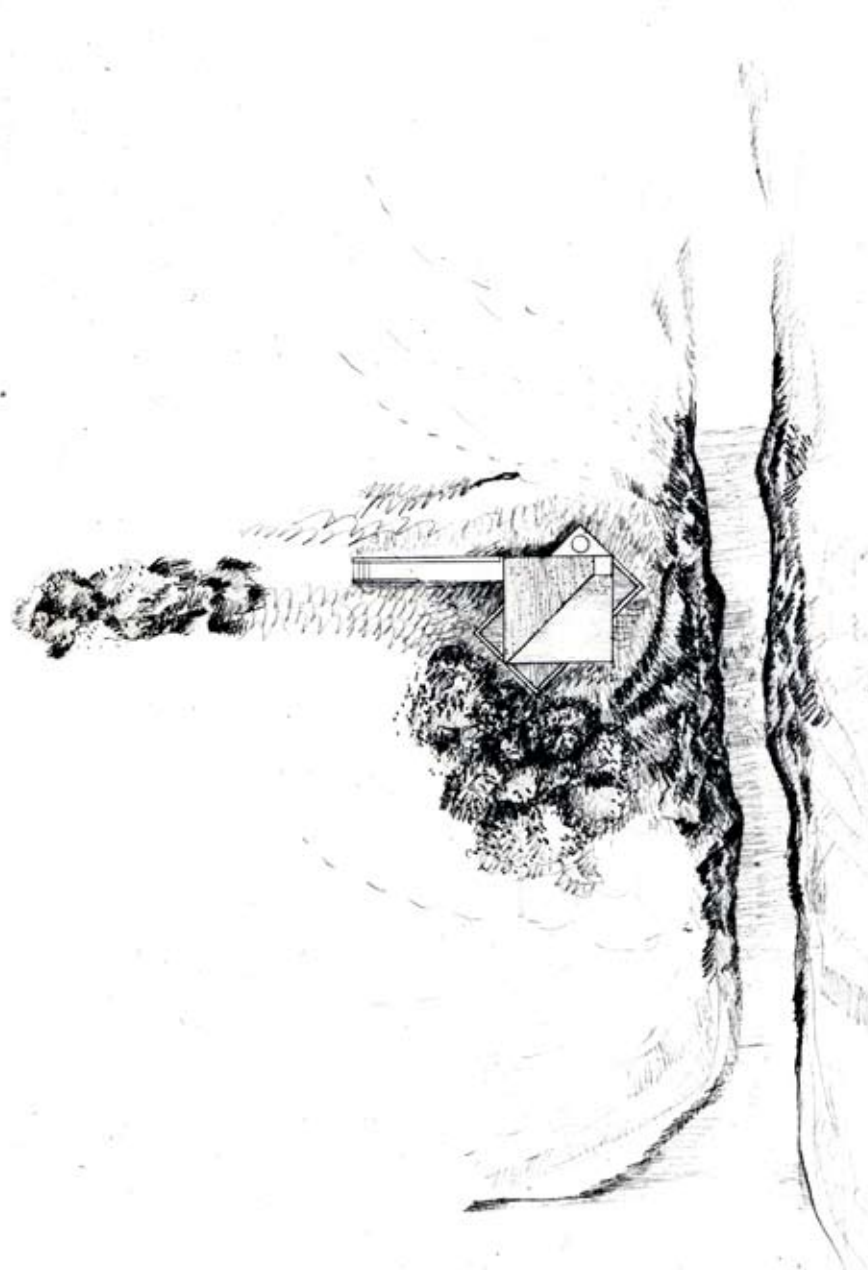
The rotated wall footings were designed for drainage and for retention of the ground that they were on. The bearing wall structure is vertical in nature, three and one-half stories high, each story having its own balcony facing different views.

In the interior planning, the rooms are small limited because of heat loss considerations, (often 20 degrees below zero in the winter). Spatial variety was attempted, however, by the use of an L shape downstairs and by differences in ceiling heights. The windows are placed in rotation for maximum sunlight and views.



Above: Site section sketch; Opposite: Exterior approach

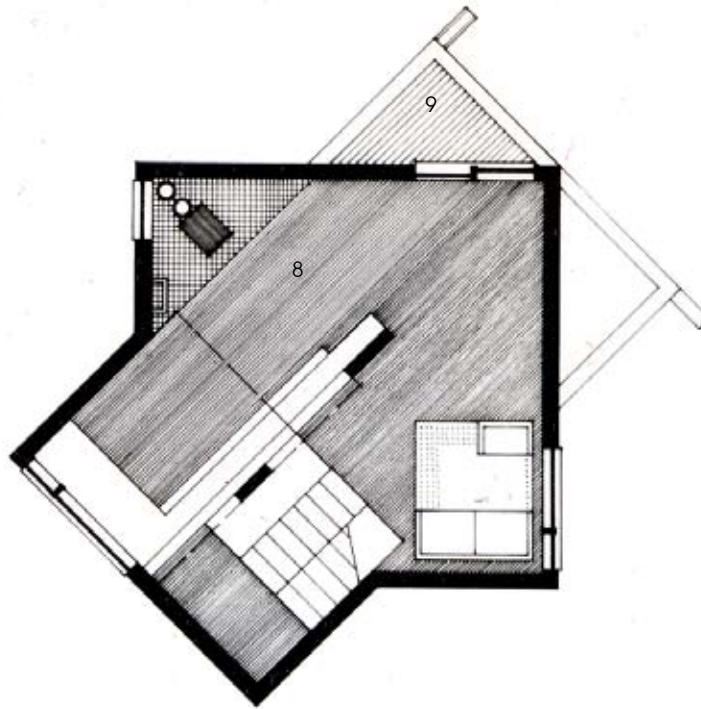




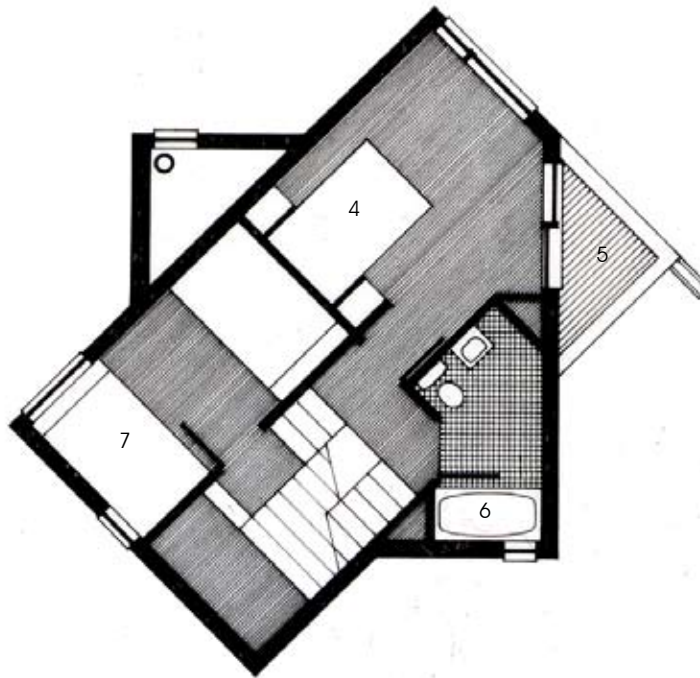
Above (left): View from waterfall;
Above (right): Site plan;
Below: View toward the entry

Floor Plans

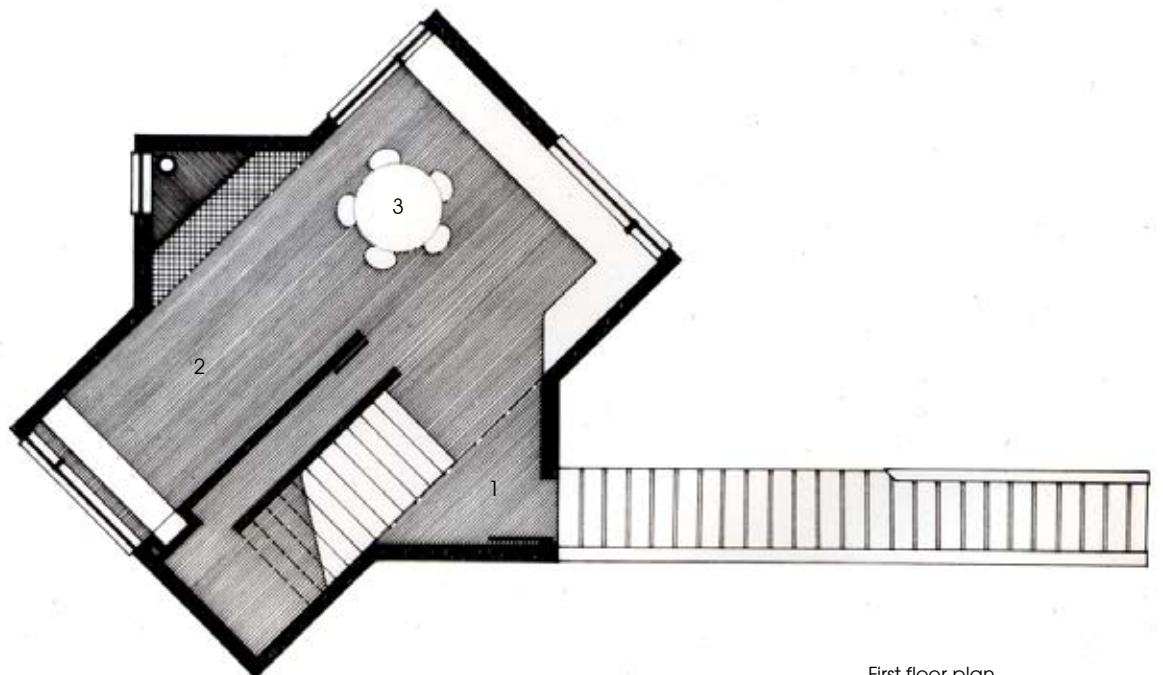
- 1 Entry
- 2 Kitchen
- 3 Living
- 4 Bedroom 1
- 5 Deck 1
- 6 Bathroom
- 7 Bedroom 2
- 8 Studio
- 9 Deck 2



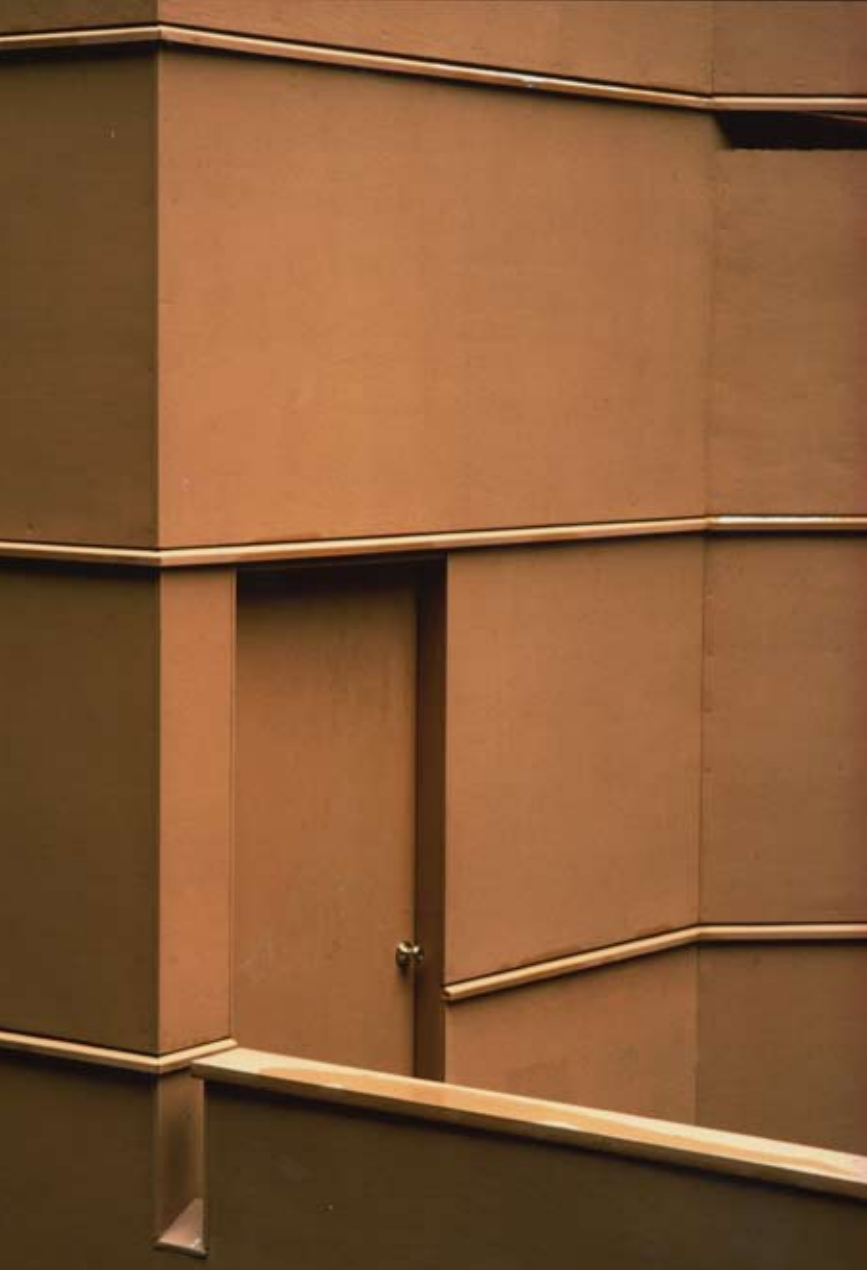
Third floor plan



Second floor plan



First floor plan



Left: Entry bridge; Right: Stair to studio



Studio from the stair



