

CAPLESJEFFERSON**ARCHITECTS**PC  
*Marcus Garvey Houses Community Center*



## Marcus Garvey Houses Community Center

Brooklyn, New York

2005

*Our analysis led to the physical sectoring of the outdoors in order to eliminate zones of friction. Each generation, each cycle of the day's activities, each group of activities has its own sector, its own physical sphere. Teens can play at basketball, while young children are in the play-park and seniors sit out in their own open court. The interior is transparently arranged to allow all children to remain in eye contact with their protectors. The courtyard is a place of safety in the middle of a troubled neighborhood, protected from crossfire by bulletproof glass that reveals the constructive life within, inviting participation to the good folks who pass by.*

### Project

A new community center in the middle of an existing 1970's Housing Authority project in the Brownsville section of Brooklyn.

### Social Objective

Create a series of small protected landscapes for children and adults where there is now a disused urban void.

### Solution

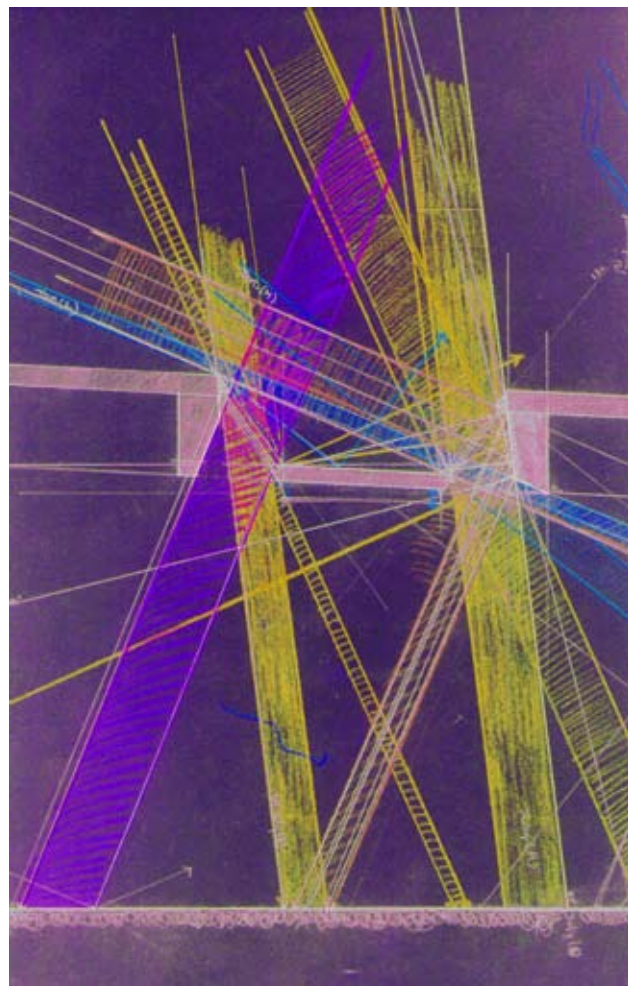
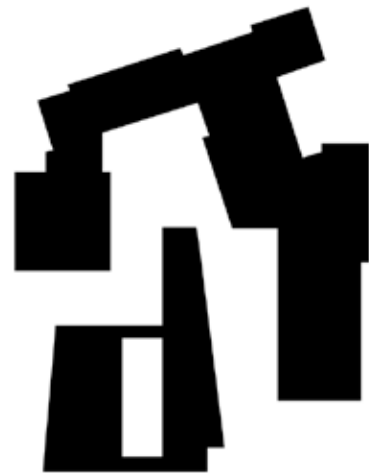
Develop a series of inner and outer courtyards with different characters and functions - a paved inner court and fountain, a grove of trees, a paved and shaded outer court, a playground, a basketball court.

### Formal Objectives

1. To generate a protected exterior space.
2. To contain the space within a dominant distinct form.
3. The form will activate a number of surrounding exterior spaces

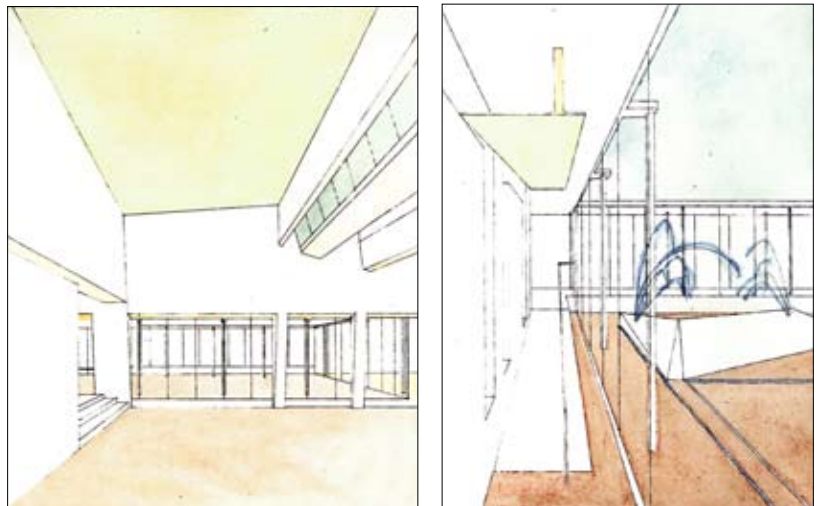
### Solution

A formal interpenetration between the existing 1970's building and the new community center in which the shape and the silhouettes reinforce the center's programmatic position as a dominant element in the complex.

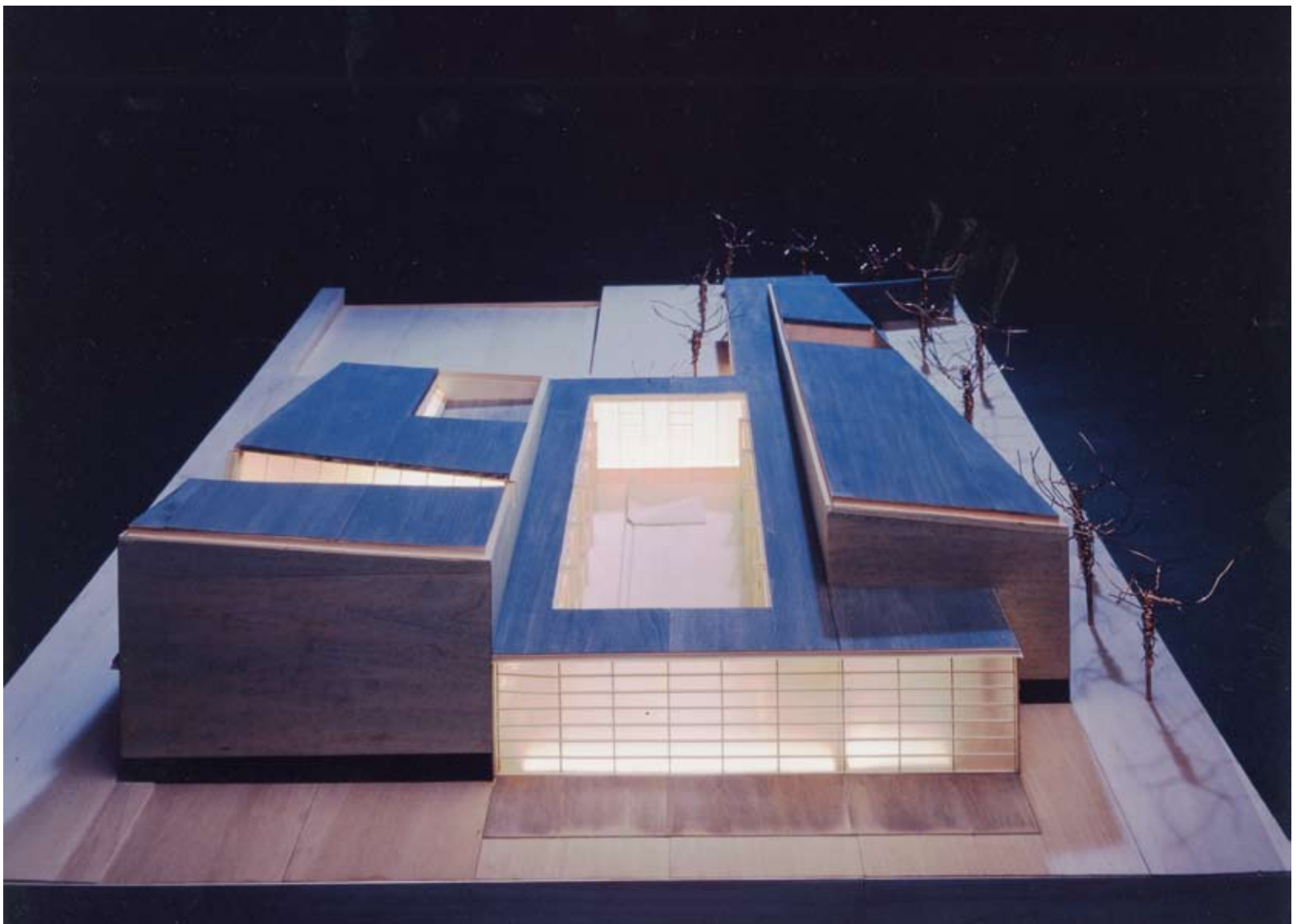


Above: Building in the context of existing towers;  
Below: Skylight study

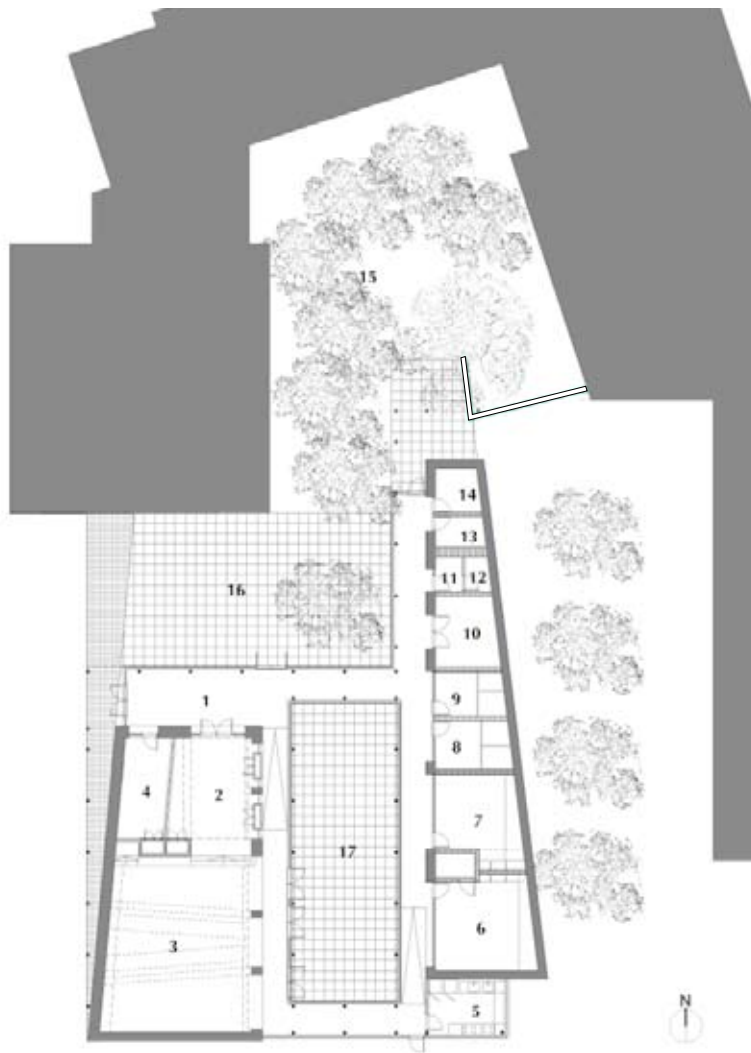
Two opaque irregular glazed brick masses of heavy construction are linked with strict orthogonal corridors of light transparent construction.. Within its precinct, an interior north-south courtyard creates a space for contemplation and special event gatherings. An east-west skylight interrupts the silhouette of the largest brick mass; it becomes the dominant light gathering element in the meeting room.



Above: Concept sketches; Below: Model with night lighting



- 1 Lobby
- 2 Game Room
- 3 Multipurpose Room
- 4 Office
- 5 Kitchen
- 6 Clubroom
- 7 Clubroom
- 8 Toilet
- 9 Toilet
- 10 Mechanical Room
- 11 Staff Toilet
- 12 Janitor Room
- 13 Water Room
- 14 Electrical Room
- 15 Courtyard - Grove
- 16 Courtyard - Crushed Stone
- 17 Interior Courtyard



Ground floor plan

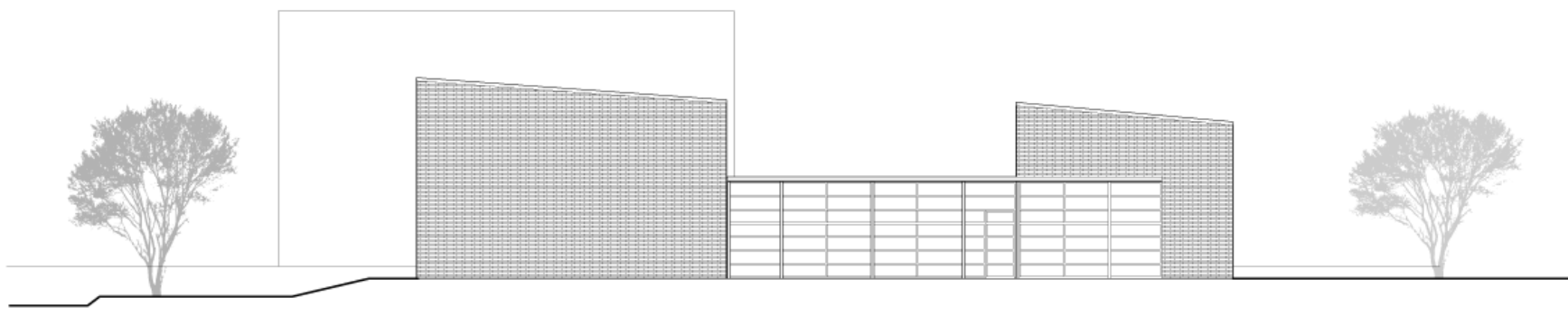
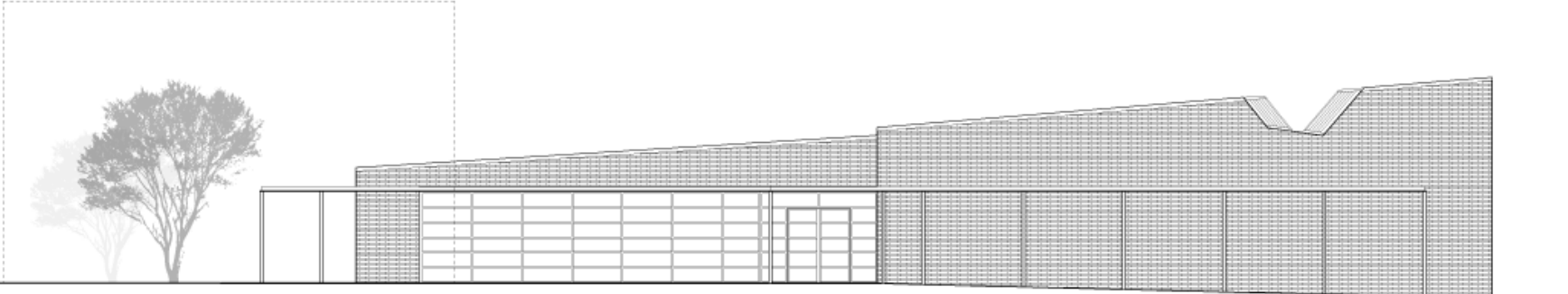


Roof plan

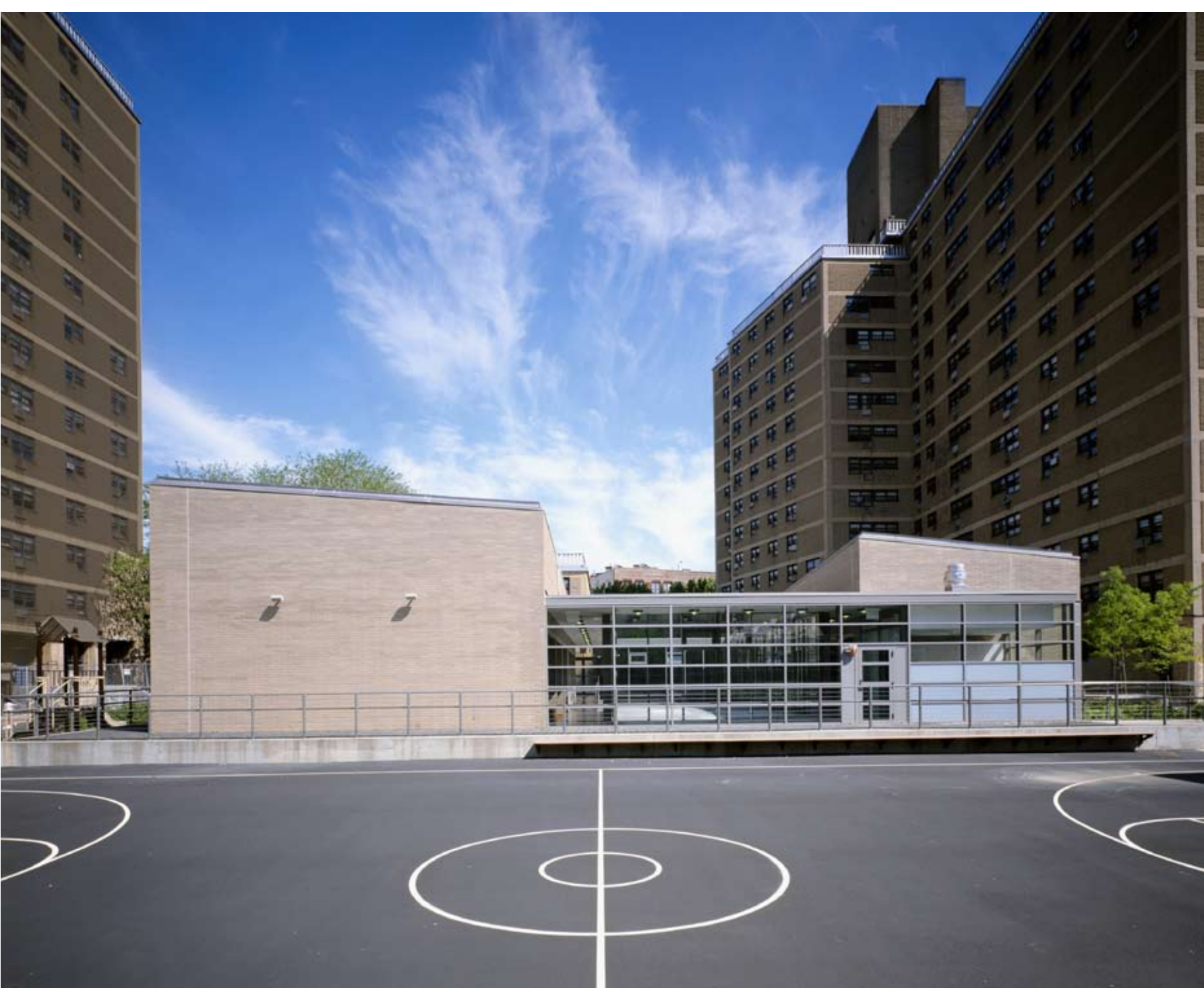


Above: Aerial context from north; Below: Aerial context from south





Above: West elevation at entry; Middle: South elevation at ball court;  
Below: South building elevation





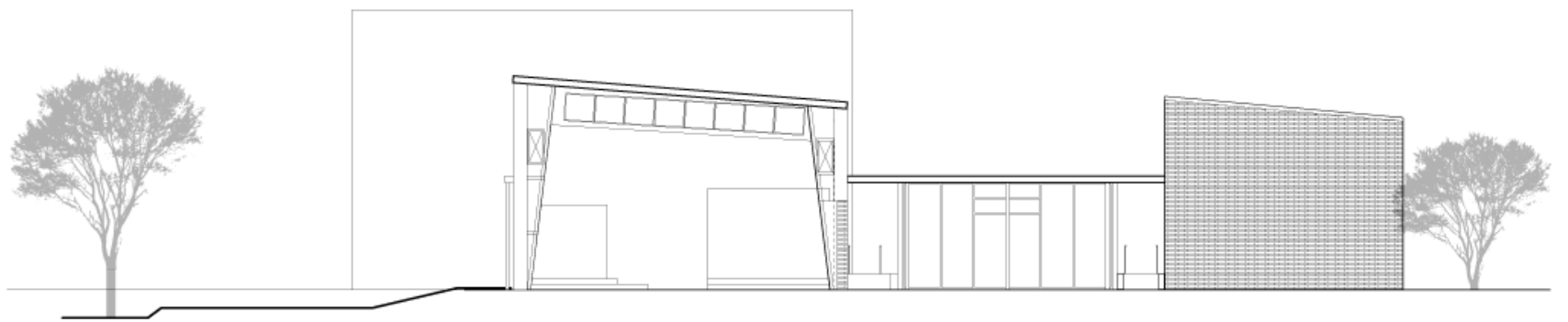
Above: Structure exposed within courtyard; Below: Building courtyard





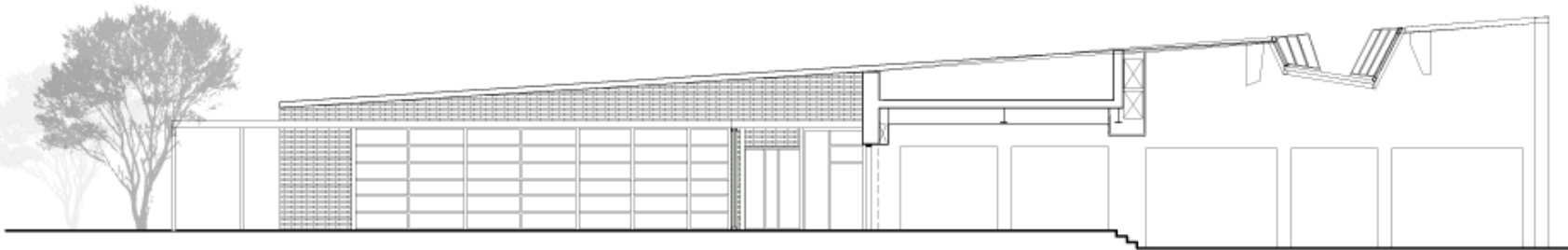
Above: Study model;  
Below: Senior grove and courtyard at night





Above: Building section;  
Below: Billiard room looking towards meeting room





Building Section through billiard and meeting rooms



Meeting room towards courtyard and classrooms beyond



Looking into the meeting room

